

Technical Details

- Dimensions: 139 x 68 x 13.4mm
- Ports: G1/4"
- Fins: 0.6mm x 3.8mm
- Channels: 1mm x 3.8mm

Box Contents

- 1 x Xbox 360 Waterblock
- 8 x Screws
- 8 x Washers
- G1/4" fittings sold separately



The waterblock installation process takes place after the Xbox 360 has been disassembled. The guides below show the disassembly process. Warning: This will void your Xbox warranty.

<http://www.anandtech.com/systems/showdoc.aspx?i=2610>

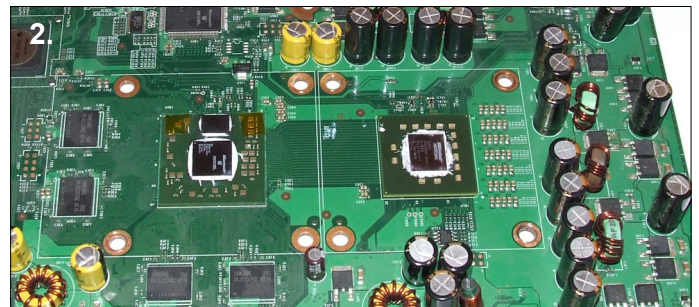
<http://www.informit.com/articles/article.aspx?p=430626>

http://www.xboxchopshop.com/catalog/man_360_open.php

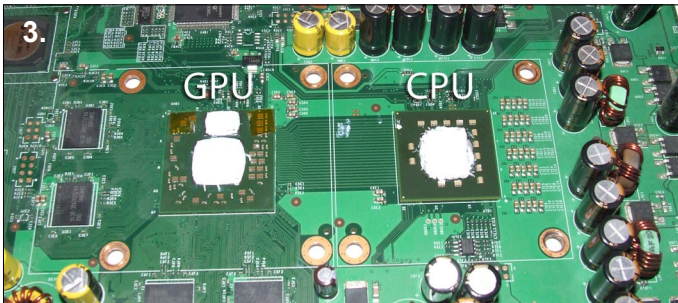
In the following steps the waterblock is shown without tubing or other watercooling components connected. This has been done to make it easier to see the installation process. All watercooling components should be leak tested prior to the steps below.



1. Screw the barbs into the G1/4" ports using an adjustable spanner. Make sure the o-rings are fully compressed.



2. Clean the CPU and GPU to remove any residue left from the thermal pads.



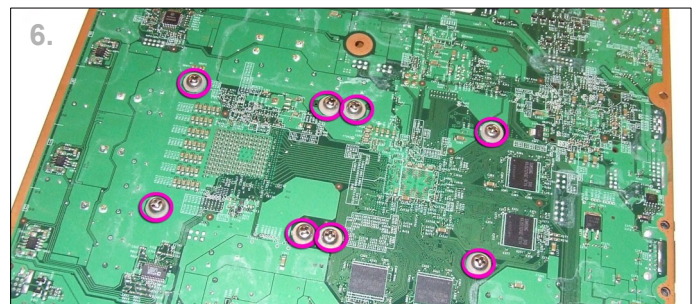
3. Apply thermal paste to the CPU and GPU cores.



4. Remove the protective tape from the waterblock's copper base ready for installation.



5. Place the waterblock over the CPU and GPU making sure the holes on the board line up with the edges of the waterblock. With one hand on the waterblock carefully turn the board upside down.



6. Finally use the 8 screws and 8 washers to attach the waterblock. It is best to start by screwing in all 8 screws loosely. When you are happy with the position of the block gradually tighten each of the screws. It is important not to overtighten the screws as this could damage the CPU or GPU.

7. The Xbox is now ready for reassembly