

Technical Details

- Dimensions: 258 x 127 x 9mm (19mm at ports)
- Ports: G1/4"

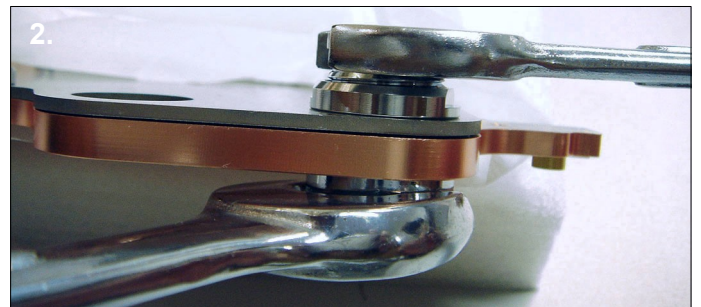
Box Contents

- 1 x 6990 Waterblock
- 8 x M3 x 6mm Screws / Washers
- 8 x M3 x 8mm Screws / Washers
- 3 x M3 Nut
- 8 x Thermal Pads (7 Blue, 1 Black)
- 1 x Thermal Paste
- 2 x G1/4" Plugs
- 2 x Rings for long threads(optional)
- G1/4" fittings sold separately*

Note: This waterblock is only suitable for reference design 6990 cards. If you are unsure if your card is a reference design 6990 contact us prior to installation to make sure.



1. The waterblock is designed for crossfire setups so you can fit the G1/4" fittings to either side of the block. Decide which configuration is best for your system.



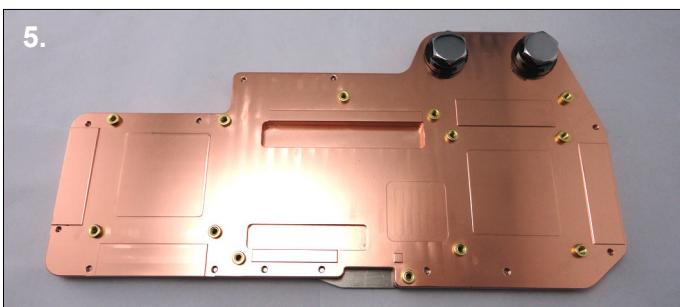
2. **IMPORTANT:** When you install the G1/4" fittings or plugs in steps 2,3 you will need a second wrench on the reverse side of the bulkhead fitting to make sure it doesn't unscrew.



3. Use the provided plugs to block the unused G1/4" ports. Make sure the o-rings are fully compressed.



4. If you are using G1/4" barbs/fittings with a long thread you will need to use the supplied rings to avoid blocking the flow. Attach the barbs to your chosen ports using an adjustable spanner. Make sure the o-rings are fully compressed.



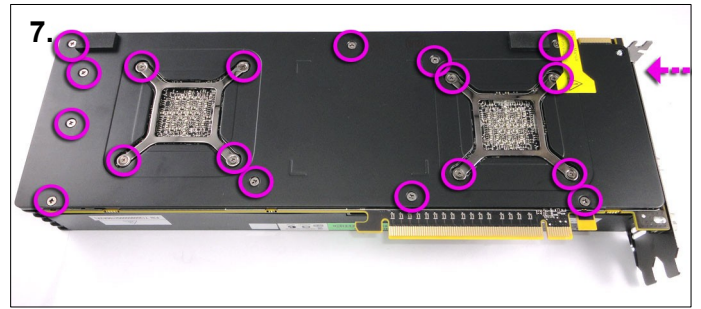
5. The block is now ready to be connected to the other watercooling components for leak testing.

NEXT PAGE →

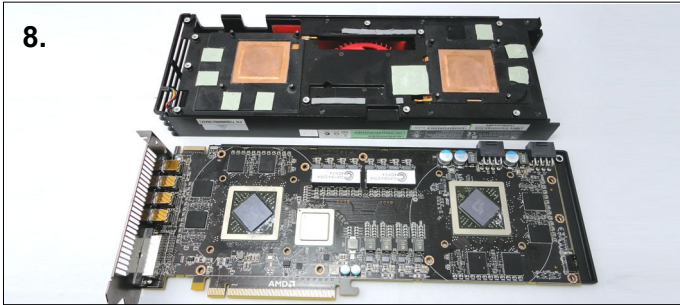
In the next steps the waterblock is shown without tubing or other watercooling components connected. This has been done to make it easier to see the installation process.



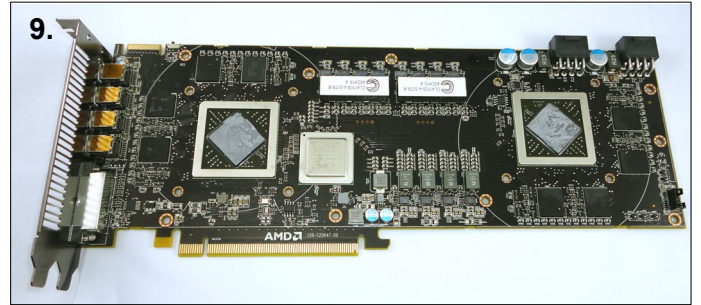
6. Before handing the card you should take precautions to avoid static damage. Remove the 6990 card from the box ready for installation.



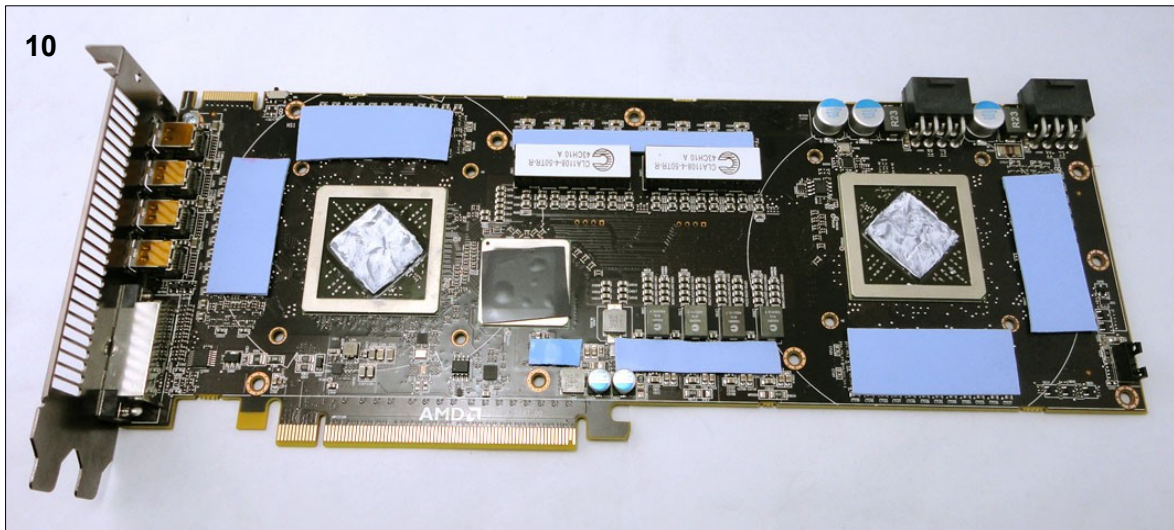
7. Remove the two screws on the bracket next to the DVI ports. Now turn the card on its back and remove the 18 screws highlighted above.



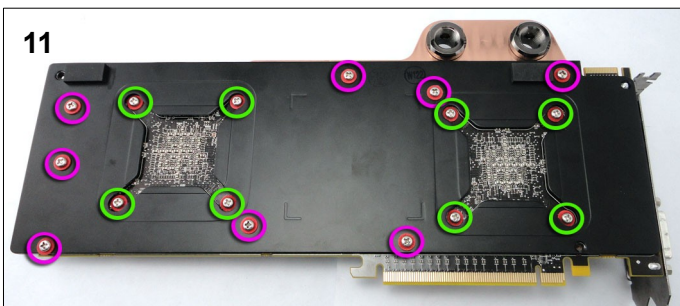
8. Turn the card back over and carefully remove the heatsink and fan. Now the card and heatsink are separated detach the fan power cable from the fan header.



9. Clean the thermal paste from the GPU cores ready for installation. Remove any residue left from the thermal pads.



10. Remove the tape from both sides of the thermal pads. Place the black pads on the chipset and use the thicker blue pads on the seven locations shown above. Next apply thermal paste to the GPU cores.



11. Place the block over the card and turn it over, making sure the thermal pads don't move. Fit the eight 6mm screws around the GPUs in the positions marked in green. Now fit the backplate and attach the eight 8mm screws marked in pink. Do not over tighten the screws as this may bend the card and cause permanent damage.



12. Fit the M3 nuts over the screws on the right of the card to secure the backplate. The card is now ready for use. When you first boot it is advisable to use ATITool or other software to check the core temperature. If the temperature is high you will need to remount the block.