

XSPC®



H2 Tower

Contents

Component list Page 3 - 5

Accessories Page 5 - 6

Preparing the base panel Page 7

Preparing the back panel Page 8

Preparing the front panel Page 9

Attaching the back panel Page 10

Attaching the front panel Page 11

Attaching the center panel Page 12

Fitting the beams Page 13

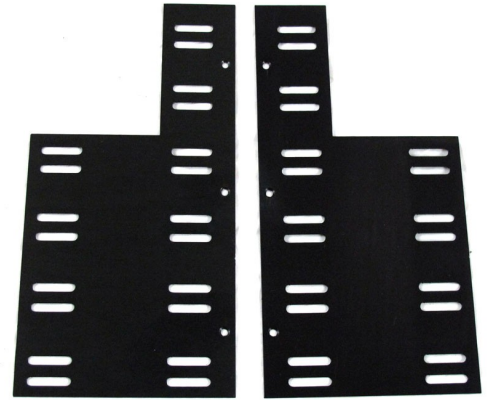
Attaching the HDD cage Page 14

Fitting the motherboard tray Page 15

Fitting the side panels Page 16

Radiator placements Page 17

Troubleshooting Page 18



The XSPC H2 is a PC case specifically designed for high end PC watercooling. It can support a quad, single and triple 120mm radiator, while leaving plenty of space for tubing routing. The case is supplied in flat pack form, so you will need a little time and patience to get it set up correctly. Assembly should take 1-2 hours, depending on your experience level.

This manual gives step by step instructions for assembling the H2 case. It is advisable to read all the way through the instructions at least once before you start assembly. It will save time in the long run.

When you are ready to begin installation, you should first unpack the box and check that no components are missing (see pages 3-6). If any parts are missing from the box please contact XSPC technical support.

www.xspc.biz/support

Specification

Dimensions:

618.9 x 246.6 x 696.8mm

Material:

Brushed aluminium – Black anodized

Screw size:

6-32 UNC

Features:

8x 5.25" bays *

3x HDD bays (6x with optional extra HDD cage.)

1x SSD tray (up to 6x with optional extra trays)

6x 120mm fan grills

- 1x Quad 120mm

- 2x Single 120mm

1x Acrylic window

**Front 5.25" bay covers sold separately*

Component List



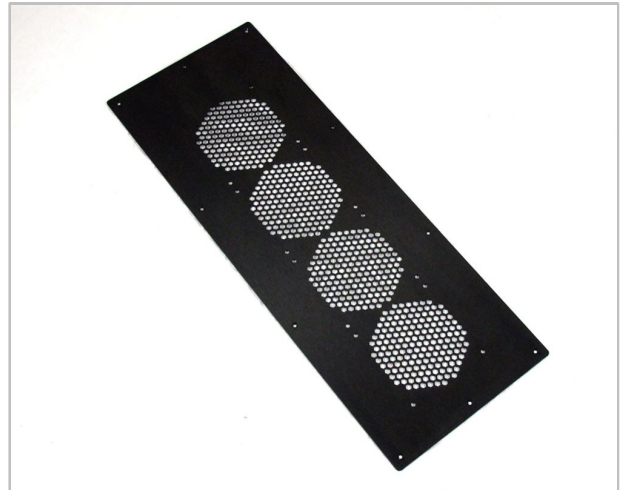
[A] Base Panel x1



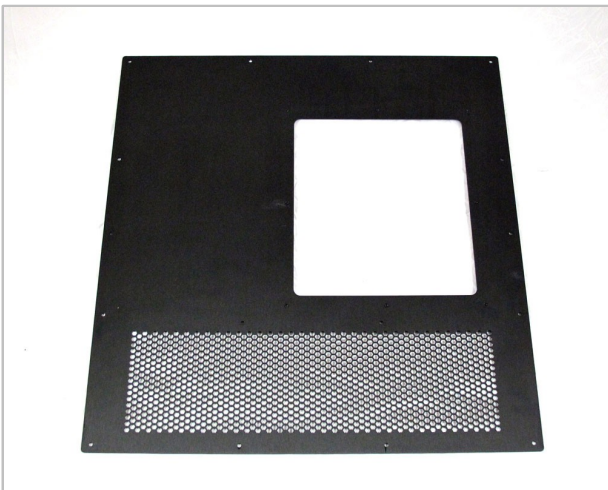
[B] Back Panel x1



[C] Front Panel x1



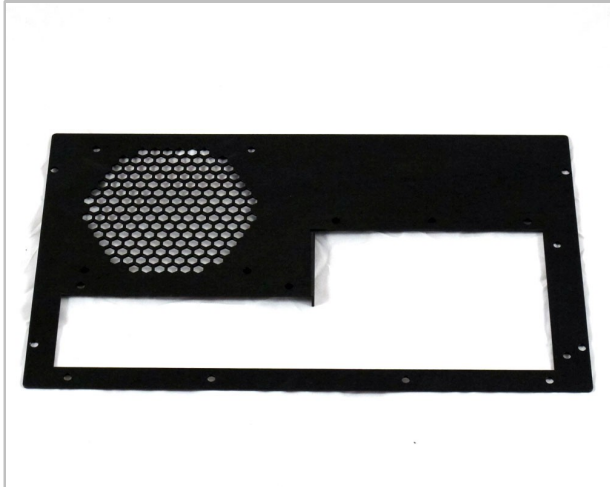
[D] Top Panel x1



[E] Right Panel x1



[F] Left Panel x1



[G] MB Cover Panel x1



[H] PCI Panel x1



[I] Motherboard Tray x1



[J] HDD Rack x1



[K] 5.25" Bay Sides x2



[L] L Beam x2



[M] Center Panel x1



[N] MB Support Beam x1

Accessories



SSD Tray x1



Castors x4



Power Switch x1



PCI Slot Covers x7



6-32 Thumb Screw x65



6-32 Countersink Screw x38



6-32 Hex Screw x28



Motherboard Standoff x14

Optional Accessories / Spares

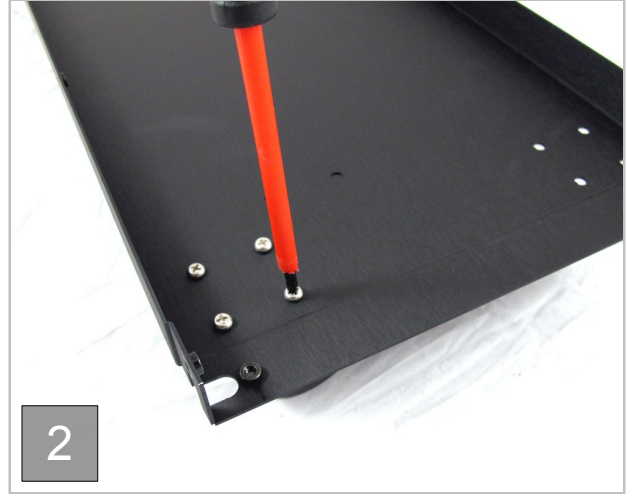
Optional accessories and spares can be purchased from www.xspc.biz or from an approved XSPC reseller www.xspc.biz/resellers



Part 1: Preparing the Base Panel



Take panel [A] and place it on a flat surface, protected by a clean sheet.



Place a castor under a corner of the panel and line up the 4 holes. Put a screw through each hole.



On the underside of the panel attach a nut to each screw and tighten using a screwdriver.



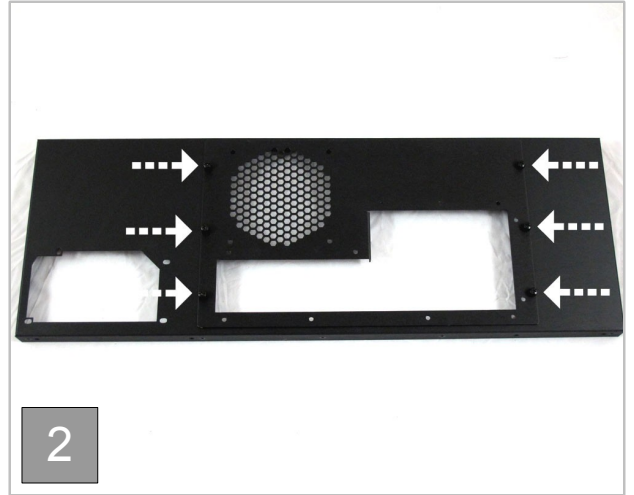
Repeat the process for each of the four castors.



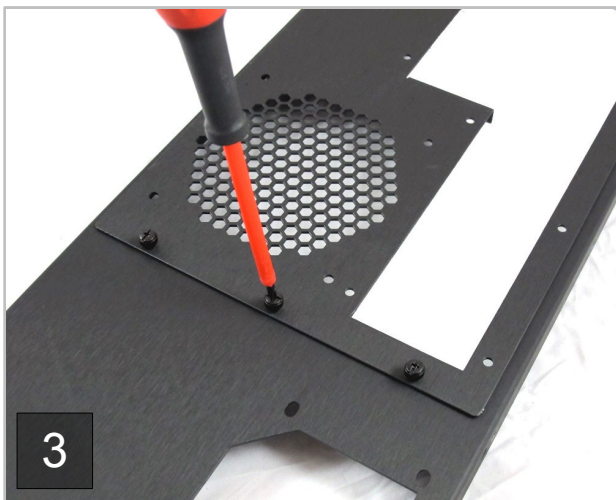
Part 2: Preparing the Back Panel



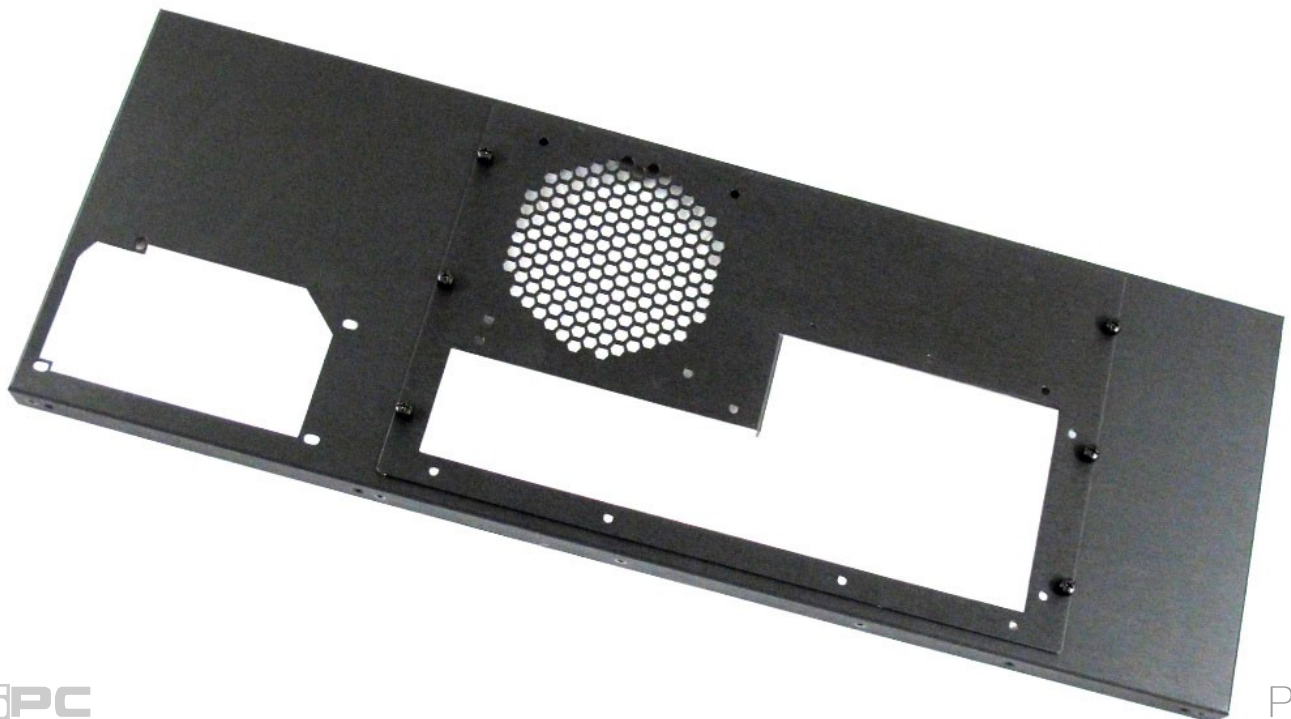
Put panel [B] on a flat surface facing upward.



Place panel [G] over panel [B] and line up the six holes.



Attach panel [G] using six 6-32 thumb screws.



Part 3: Preparing the Front Panel



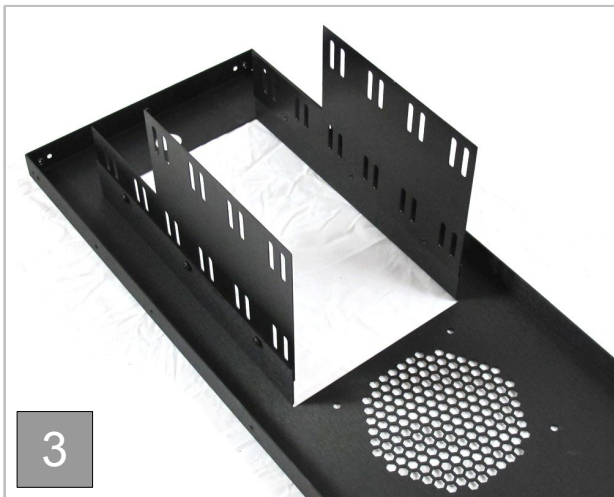
1

Place panel [C] facing down on a flat surface.



2

Take one of the [K] bay panels and attach it using 3 countersunk screws.



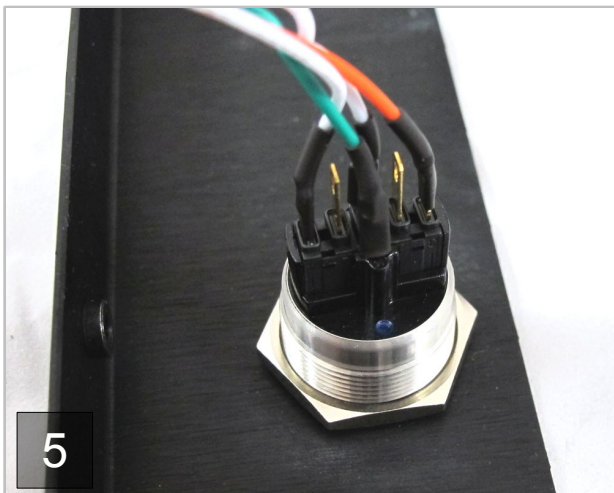
3

Repeat for the other side. You will need to use a small screwdriver due to limited space.



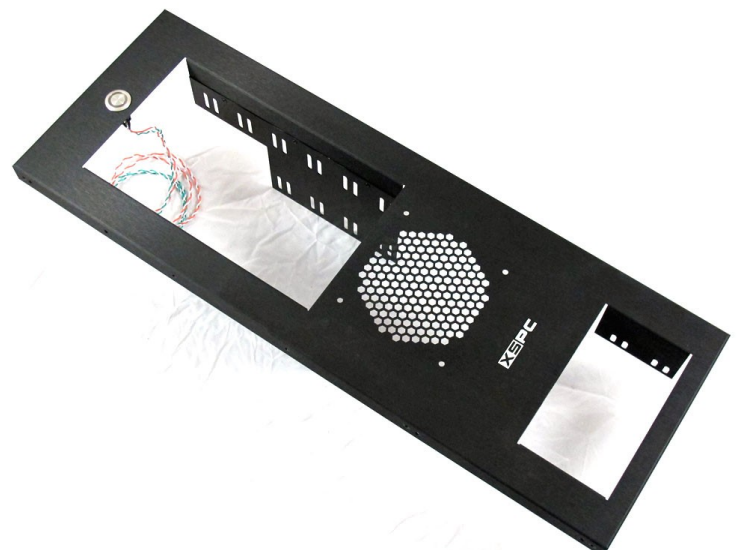
4

Flip the panel over and thread the power cables through the hole on the front.



5

On the reverse side place an o-ring and nut over the switch then tighten the nut.



Part 4: Attaching the Back Panel



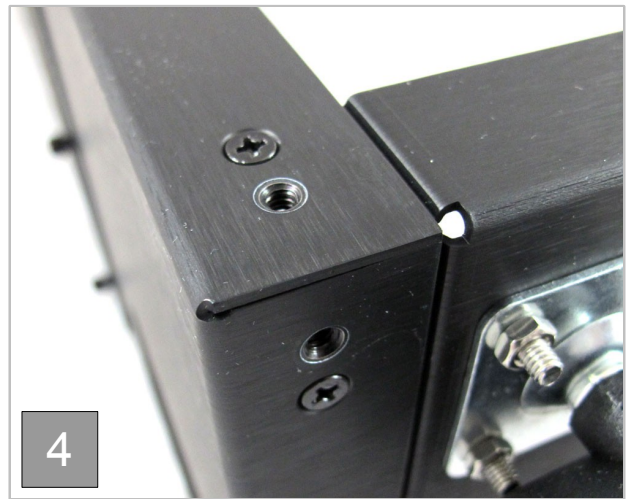
Take the prepared panels [A] and [B] and slot the corners together.



Make sure the base panel is facing the the correct way.



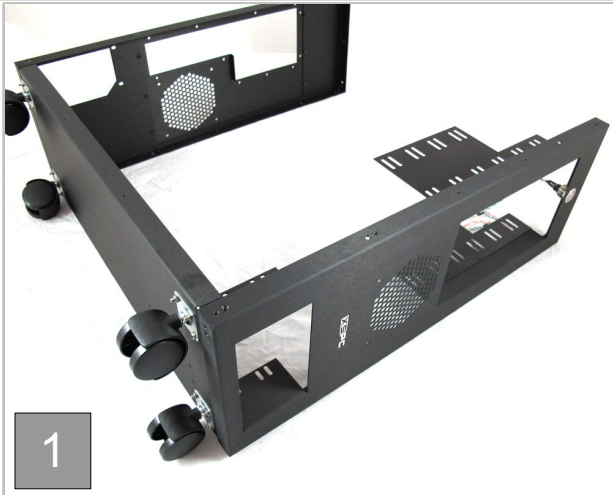
Use two countersunk screws in the two holes highlighted above.



Repeat this for the two screw holes on the other side.



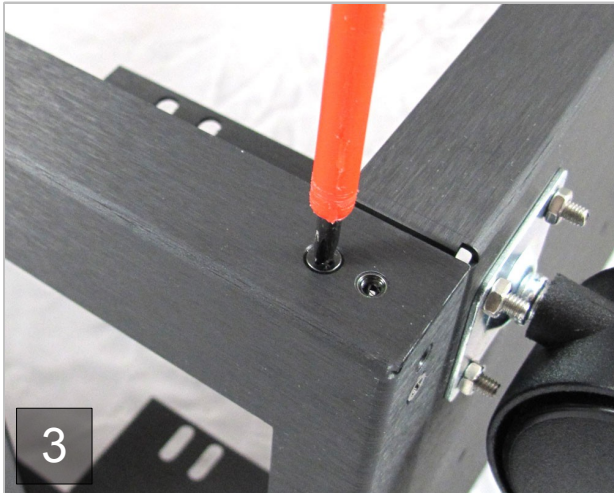
Part 5: Attaching the Front Panel



Take the prepared panel [A] and front panel [C] and slot the corners together.



Use two countersunk screws in the two holes highlighted above.



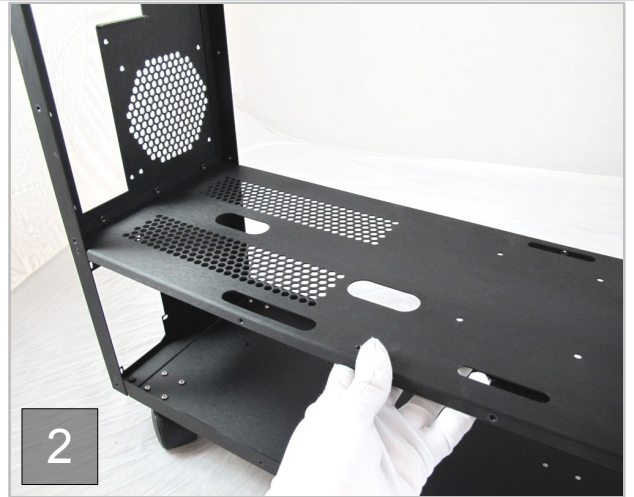
Repeat this for the two screw holes on the other side.



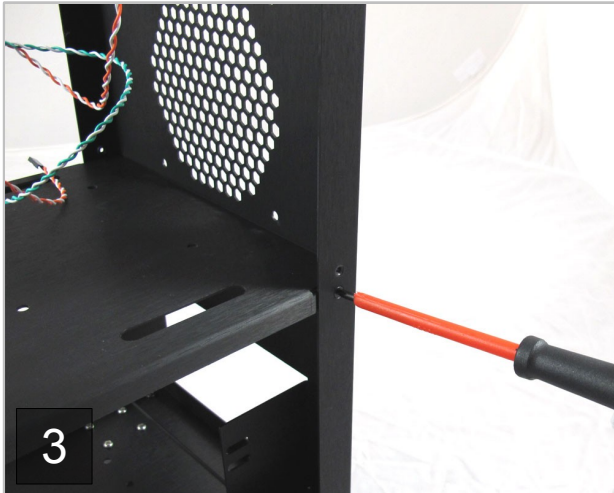
Part 6: Attaching the Center Panel



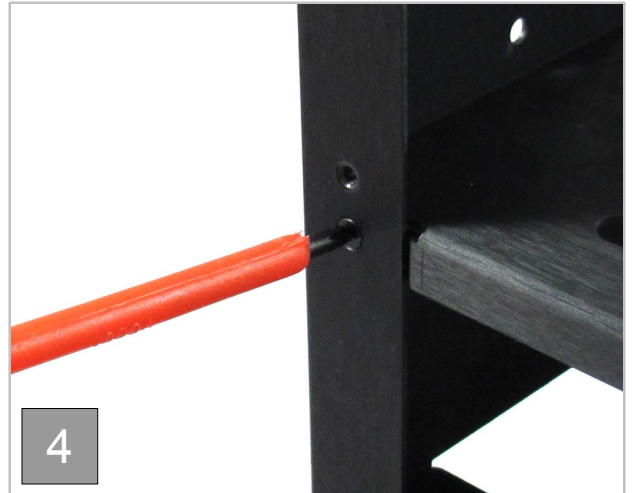
Carefully lift the case to an upright position.



Take panel [M] and place it in the center of the case. The hex holes should be towards the back.



Use a 6-32 countersunk screw on the left and right side of the panel.



Repeat step 3 on the opposite side of the case.



Part 7: Fitting the Beams



1
Take the [N] MB support beam and slot it in the position above.



2
Line up the screw holes on each side of the beam.



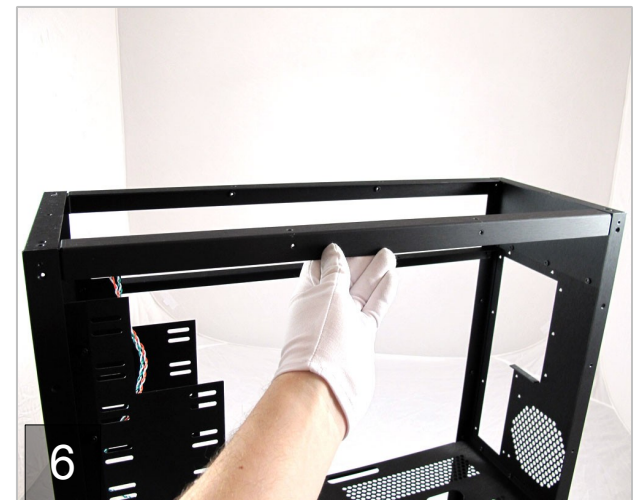
3
Use two countersunk screws to attach the beam to the front and back panels.



4
Now take an [L] beam and fit it in the top corners of the case.

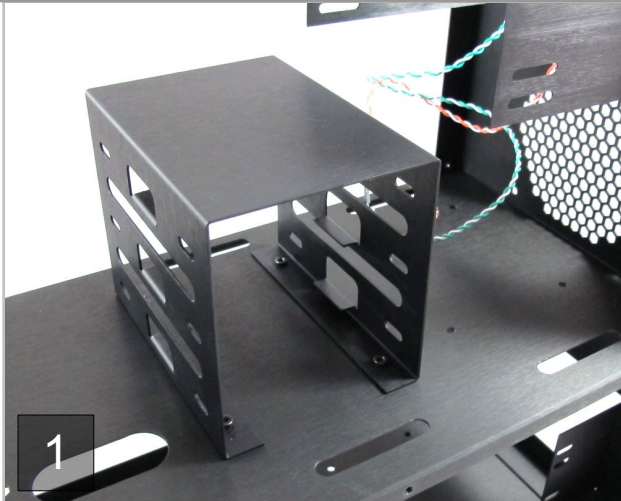


5
Use two countersink screws to attach the L beam to the front and back panels.

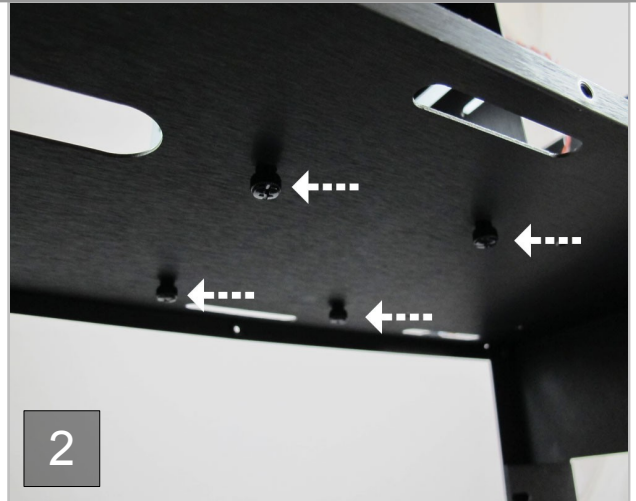


6
Repeat this for the other side, using the second L beam.

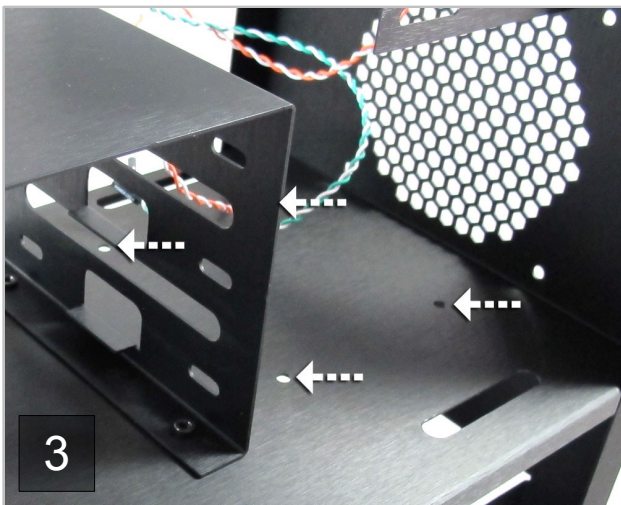
Part 8: Attaching the HDD Cage



Place the HDD cage over the 4 screw holes on the center panel.



Use four 6-32 thumb screws to attach the HDD cage from under the center panel.



A second optional HDD cage can be added in the position shown.



You may wish to fit a fan to the front to provide HDD cooling.



Part 9: Preparing and Fitting the Motherboard Tray



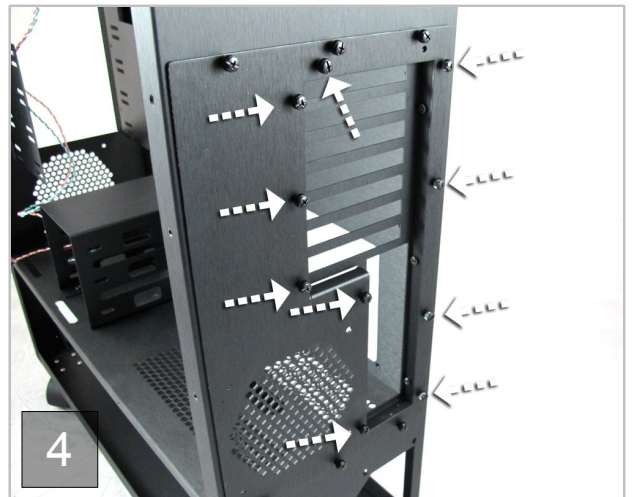
Move panel [H] over panel [I] and line up the 3 screwholes.



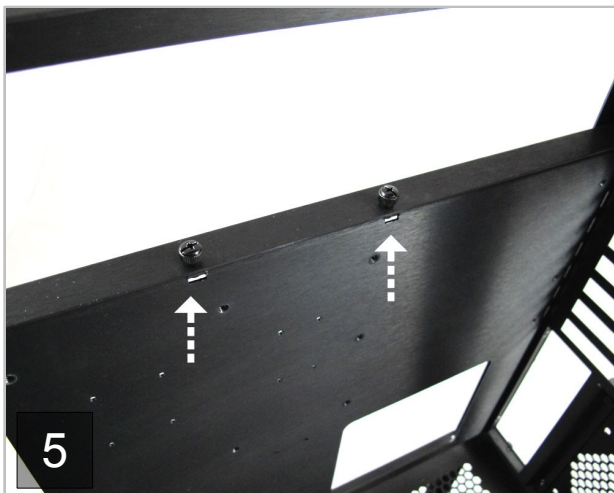
Use three 6-32 hex screws to attach [I] and [H].



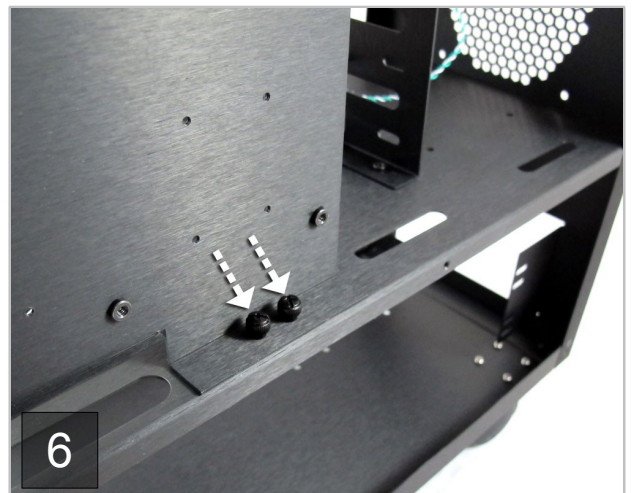
From the inside of the case, place the motherboard tray in the position shown above.



Line up the ten holes on the back and use 6-32 thumb screws to attach the motherboard tray.



Attach the motherboard tray to the beam by using two 6-32 thumb screws.



On the reverse side attach the motherboard tray to the center panel using two 6-32 thumb screws.

Part 10: Fitting the Top and Side Panels



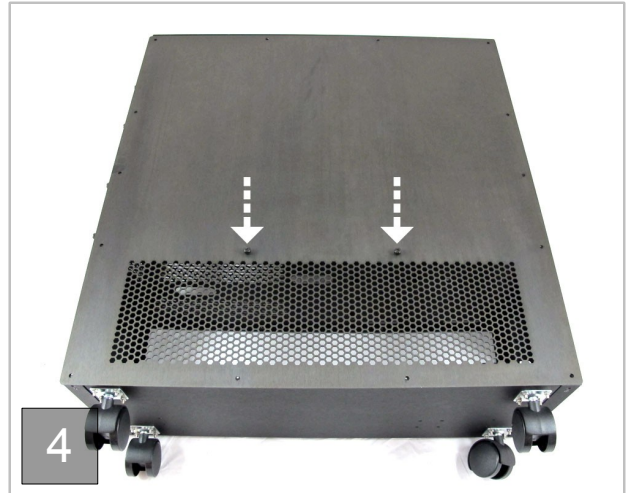
When fitting the side panels you should loosely fit each screw before tightening. This will allow you to shift the panel into line.



Place panel [D] on the top of the case and attach it using ten countersunk screws.



Lay the case flat on its side, ready for fitting the side panels.



Start with the two screws shown above and fit all sixteen 6-32 thumb screws to panel [F].

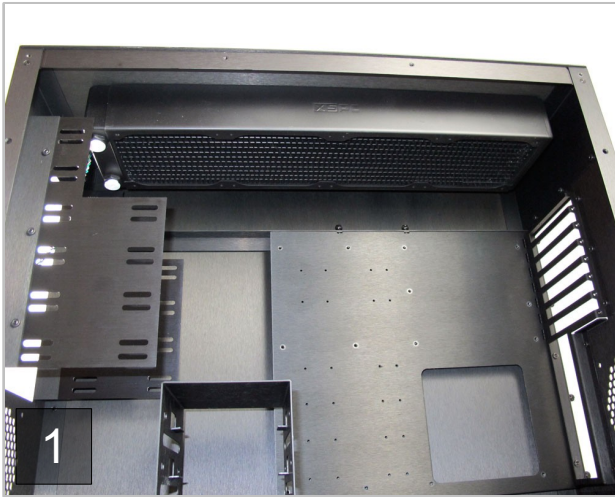


Repeat this for the right panel [E]

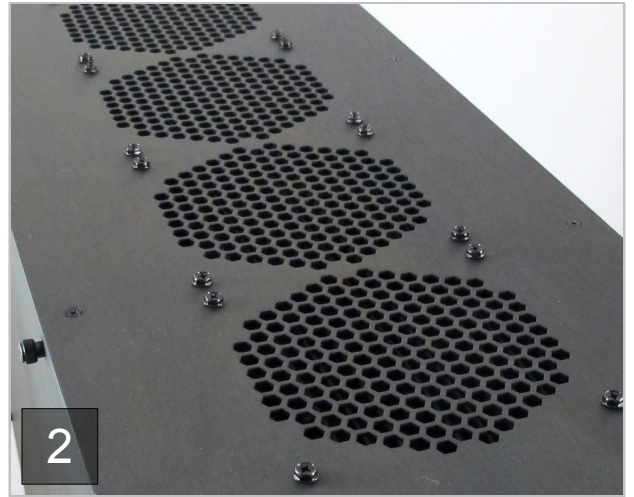


Radiator placements

Position 1: The H2 supports up to a quad 120mm radiator in the roof of the case. You can attach it using the provided 6-32 screws or the screws provided with your radiator. Only screws with a length of 6mm or below should be used.

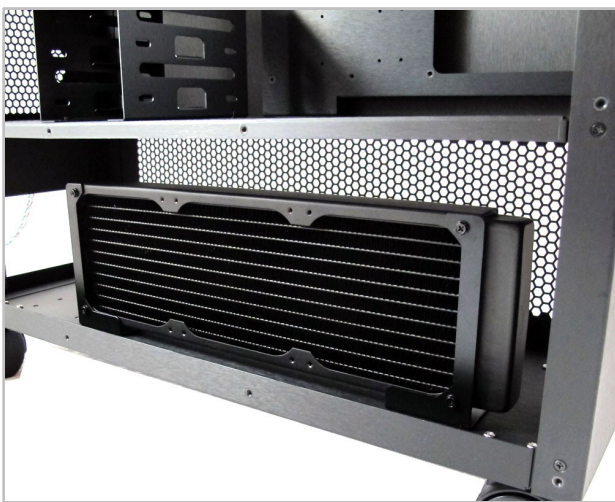


Lift the radiator to the top of the case and line up the screw holes.



Attach the XSPC radiator using 6-32 screws.

Position 2: You can mount a triple 120mm or 140mm radiator in the base of the case using a set of XSPC radiator brackets (sold separately). The base of the case has pre-drilled holes for the brackets.



Use short (under 6mm) 6-32 screws to screw through the bracket and into the radiator.



Position 3: A single 120mm radiator can be mounted on the front panel, but only if the optional second HDD cage has not been fitted.

Q – The side panel screw holes don't line up

A – Loosen all the screws on the side panel and slide the panel until the holes line up. You should only tighten the side panel screws when all screws are in place.

Q – I was not supplied with any 5.25" bay covers

A – This is normal, 5.25" bay covers are sold separately.

Q - Motherboard tray does not fit

A – Make sure you have not connected panel [H] to panel [G] before fitting the motherboard tray.

Q - Power switch doesn't light up

A - It's likely that the power led is connected the wrong way on the motherboard header.

Q - Power switch not working

A – Make sure you have connected the switch to the correct header on the motherboard.

Q – I am missing a part or I have lost a part

A – Please contact XSPC support for assistance
www.xspc.biz/support

XSPC Contact Details

Website - www.xspc.biz

Support - www.xspc.biz/support



XSPC®